

# LUTZ CIVIC REVIEW

Monthly Newsletter of the Lutz Civic Association (LCA).

## Supervisor of Elections Buddy Johnson Comes to Lutz



*Hillsborough County Supervisor of Elections Buddy Johnson.*

Come to the next Lutz Civic Association Meeting on October 18th and learn about the status of voting technology for Florida and Hillsborough County.

Florida is exploring additional technology changes to provide paper trails for voting. Come and learn what that might mean for voters and taxpayers and share your opinion and questions.

Get an update on upcoming voting and activities at the supervisor of elections office.

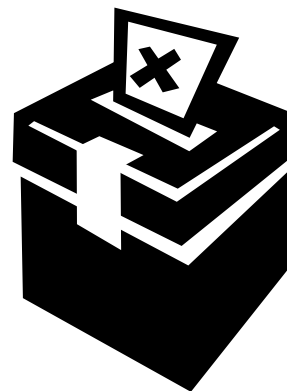
Invite your friends, colleagues and neighbors. Don't be a hanging chad. Come and hear what these changes will mean to you and our future elections. ▼

### Inside This Issue

Hot Community News	2
Membership Application	INSERT
Bus. & Non-Profit Members	INSERT
Land-Use Development	Page 3
Board of Directors	Page 3

### October Community Meeting *Everyone's Welcome*

7 p.m., Thursday, Oct. 18, 2007  
Lutz Community Center  
98 - 1st Avenue Northwest  
Just off Lutz Lake Fern Road, across from Lutz Branch Library



### Presidential Preference Primary

**Election Date:** Jan. 29, 2008  
**Deadline to Register to Vote:** Dec. 31, 2007  
**Early Voting Period:** Jan. 14 - 26, 2008  
**Last Day to Request an Absentee Ballot:** 5 p.m., Jan. 23, 2008

# Hot Community News

Auralee Buckingham and Steve Polzin, Board Members

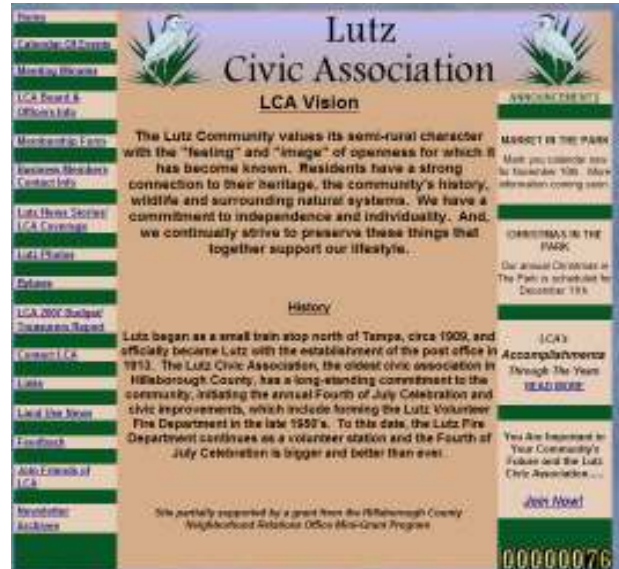
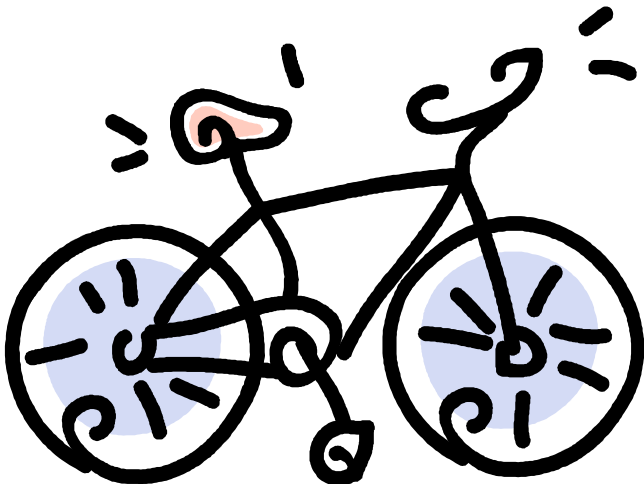
**Ninth Annual Lutz Bike Rodeo, 9 a.m. to Noon, Saturday, October 27 at Lutz Elementary School.** This event is sponsored by the Lutz Sheriff's Department, the Lutz Community Council, local businesses and the Lutz/Land o' Lakes Woman's Club.

Volunteers will man bike safety stations and help fit FREE helmets for children ages 2 to 12 years. Free minor repairs will be available to students who bring their own bikes.

There will be six bicycles given away during the morning. Children must be accompanied by a parent.

This event is available to other schools and to students who are home schooled.

Bike safety for young children is our mission. For more information call Deputy Sheriff Tom Wesolowski at 264-8950.



[www.lutzcivicassociation.org](http://www.lutzcivicassociation.org) The LCA web site had a soft launch a few months ago and now it is time to get out the word and let your friends and neighbors know.

Over the next several months we will look for your feedback as we fine tune the layout and add to the content to help busy folks keep up with the work of the association.

The site is a handy source for membership forms, copies of newsletters, photos of past events, bylaws, the budget and numerous other items. We anticipate regular updates and additions and hope that the site can become a handy bookmark for many of the activities in Lutz.

Please spend some time on the site and drop us a note on any ideas. We can always use some more help if you have an inkling to get involved in web site support.

We want to thank the Hillsborough County Neighborhood Relations Office for the mini-grant support that enabled us to design and kick off the site. ▼

## LCA Mission Statement

The Mission of the Lutz Civic Association, Inc. (LCA) is to provide leadership and support which enhances the quality of life in the community of Lutz.

## LCA Vision Statement

The objectives and purposes of the LCA shall be to preserve and promote the heritage, natural systems and quality of life in Lutz; and, to promote community cohesiveness while respecting the independence and individuality of all residents and businesses.

## LCA Membership Benefits

1. A monthly newsletter detailing community related news and events
2. Meetings with informative guest speakers
3. Continuation of the Lutz Civic Association-sponsored events such as the Lutz Guy'na Race fundraiser, Market in the Park, events at the Train Depot and much more



### Lutz Civic Association (LCA) Membership Application

Membership is open to anyone living in or owning a business in the Lutz Civic Association (LCA) defined boundaries of Lutz as a voting member. All Others are invited as an “Associate” member. Membership is subject to approve and includes this monthly newsletter.

NAME: \_\_\_\_\_ ADDRESS: \_\_\_\_\_

CITY: \_\_\_\_\_ STATE: \_\_\_\_\_ ZIP: \_\_\_\_\_ HM. PH. \_\_\_\_\_ BUS. PH. \_\_\_\_\_

FAX: \_\_\_\_\_ E-MAIL: \_\_\_\_\_ SIGNATURE \_\_\_\_\_

**Type of Membership (check one):**

Single - \$15     Family - \$20\*     Business - \$20     Civic - \$10\*\*     Associate - \$15\*\*\*

\*Family membership entitled two members in the same home, but only one vote.

\*\* Civic membership is a non-profit organization membership that entitles the organization to one vote.

\*\*\*Associate membership is a non-voting membership for those not living or owning a business within the Lutz boundaries.

Return to: Lutz Civic Association, P.O. Box 1, Lutz, FL 33548

## 2007 LCA Business & Non-Profit Members

Bay Cities Bank  
Body & Soul  
Boy Scout Troop 12  
Britten Dental Associates, P.A.  
C&S Enterprises  
Thomas Cone, Jr.  
Cordoba Ranch Development, LLC  
Donovan's Service  
Great Gardens & Gifts  
Fisher's Law Office, P.A.  
Florida Organ Works  
Hand in Hand Academy  
King of Copy  
Lake Brant Tax District  
Lutz Learning Center  
Lutz - Land 'O Lakes Woman's Club  
Maniscalco Elementary School  
McClain Realty  
Mrs. Tea Garden  
New Tampa Animal Hospital, P.A.  
New Tampa Pet Resort  
Orange Blossom Women's Club  
Patio Land  
Seal Swim School  
Sunset Point Center, LLC  
Tims Memorial Presbyterian Church  
Versatech Business Solutions

## Tentative 2007 LCA General Meetings

October 18- 2007 Suervisor of elections



## Other Scheduled Events

November 10 - Market in the Park

December 11 - Christmas in the Park



**Lutz Civic Association**

P.O. Box 1  
Lutz, FL 33548

**President/Director**

*Steve Polzin (08)*  
Ph. 949-5900, 416-7517  
[spolzin@tampabay.rr.com](mailto:spolzin@tampabay.rr.com)

**Vice-President/Director**

*Eleanor Cecil (08)*  
Ph. 977-9245  
[ececil@tampabay.rr.com](mailto:ececil@tampabay.rr.com)

**Secretary**

*Marion Smith*  
Ph. 949-2152  
[justagranny2004@yahoo.com](mailto:justagranny2004@yahoo.com)

**Treasurer**

*Ardyth Bahr*  
Ph. 909-2247  
[ardythbahr@verizon.net](mailto:ardythbahr@verizon.net)

**Directors**

*Auralee Buckingham (07)*  
Ph. 949-7481  
[rwb4478@gte.net](mailto:rwb4478@gte.net)

*Jay Muffly (07)*

Ph. 949-2224  
[jaymuffly@verizon.net](mailto:jaymuffly@verizon.net)

*Paul Vauhue (07)*

Ph. 948-4438, 713-6505  
[Vauhues@hotmail.com](mailto:Vauhues@hotmail.com)

*Gary Williams (07)*

Ph. 909-2740  
[gwilliams@bay-cities-bank.com](mailto:gwilliams@bay-cities-bank.com)

**Land-Use Liaison**

*Denise Layne*  
Ph. 949-3739  
[deelayne@tampabay.rr.com](mailto:deelayne@tampabay.rr.com)

**Media Support**

*Sharon Espinola*  
Ph. 948-0539  
[res04pn8@gte.net](mailto:res04pn8@gte.net)

## Land-Use Development Full Speed Ahead in Lutz

While the newspapers pummel us with stories of slowing development one would never know it based on the pace of development proposals for Lutz heading for zoning or variance hearings. Your LCA board and officers have been swamped with tracking numerous proposals and meeting with developers and planning staff to discuss the proposals.

The LCA is notified of all zoning and variance requests for Lutz and the immediately adjacent areas and we screen these requests to identify those that might merit follow-up. The LCA gets involved in those cases where we are approached by either impacted property owners or the parcel owner seeking our input. We also get involved when we feel that the proposed development might have a significant impact or set a precedent that is potentially inconsistent with the community plan or other codes and rules that govern development.

In many instances we can share our concerns and ideas with the owner/developer and can assist them in gaining approval of their development. In other instances we share our knowledge and experience with owners and neighbors and in some cases we take a position on the development or characteristics of the proposal.

Generally there is a strong Board consensus guiding us in the decision to become involved. For some issues we bring the issue back to the LCA membership to hear their perspectives.

In some cases the Board takes a position at the hearings without bringing the issue to the general membership as that is often difficult given the timing of the hearing process. When the board takes a position on behalf of the LCA we are careful to qualify it as such.

If you have any questions about Lutz development issues feel free to contact **Steve Polzin**, president, Lutz Civic Association or **Denise Layne**, land-use liaison for the organization. ▼

# Groups Receive Grants from Guv'na Funds

Thanks to the hard work of the 2007 Guv'na candidates Nancy Rehling, Annie Fernandez and Michele Northrup, a number of groups and organizations in the Lutz community were given money for worthwhile projects.

As reported in the last newsletter, the candidates raised a total of \$27,633.90. An additional \$87 was raised by auctioning a gift basket donated by Butcher Block to Michele Northrup during the August 17<sup>th</sup> Lutz Civic Association meeting. The winner of the Guv'na campaign, in this case Michele Northrup, is able to donate 10 percent of the total funds raised to groups and organizations of her choice. The Lutz Civic Association is also able to use 10 percent of funds raised for later distribution.

The following groups received money from the Guv'na funds: Scout Troop 12. \$500; Girl Scout Troops from Lutz. \$500; Brownie Troop 8. \$500; Troop 21, \$500; Cub Pack 37, \$500; Troop 339 - \$500; Junior Master Gardeners - \$500; Lutz Land O'Lakes Lions - \$700; Lutz Patriots, \$500; Learning Gate Organic Garden, \$500 from the LCA and \$600 from Michele's funds; Learning Gate School, \$2,163 from Michele's funds; Friends of the Lutz Library, \$600; Lutz Elementary, \$500; Maniscalco Elementary, \$500; Angels Unaware, \$500; Land O'Lakes Women's Club, \$1,500; Nye Park, \$1,800; Lutz Nature Park, \$3,500; Lutz Volunteer Fire Department, \$4,000; Old Lutz School, \$4,000. ▼

Lutz Civic Association  
P.O. Box 1  
Lutz, FL 33548



**Member Name**  
**Street Address**  
**City, ST ZIP Code**